



Growth Altruism Respect Love

Address: No12, Qixing Street, Shenbei New District Sshenyang  
URL: [www.roundfin.com](http://www.roundfin.com) E-mail: [admin@shbutian.com](mailto:admin@shbutian.com)



Growth Altruism Respect Love

**ROUNDFIN**<sup>®</sup>

Shenyang Roundfin Technology Co., Ltd.

# COMPANY PROFILE

Growth Altruism Respect Love

Shenyang Roundfin Trade Co., Ltd. It was founded in 2013 and special focusing on the histopathology, anatomy and funeral.

Through the continuous exploration and pursuit of Roundfin people. It has become the most professional integrator and exporter of Pathology, anatomy, funeral products in China.

Our mainly products are : Pathology and histology instruments; Consumable; Funeral Products; Mortuary Refrigerator; Anatomy Products; And Anatomical model ... .. Within them, the cryostat microtome; Microtome disposable blade, Mortuary refrigerator and the Autopsy table, are the company's iconic products. Its quality is comparable to that of international brand products. We OEM and do long time cooperation with USA and European customers.

## 【 TABLE OF CONTENT

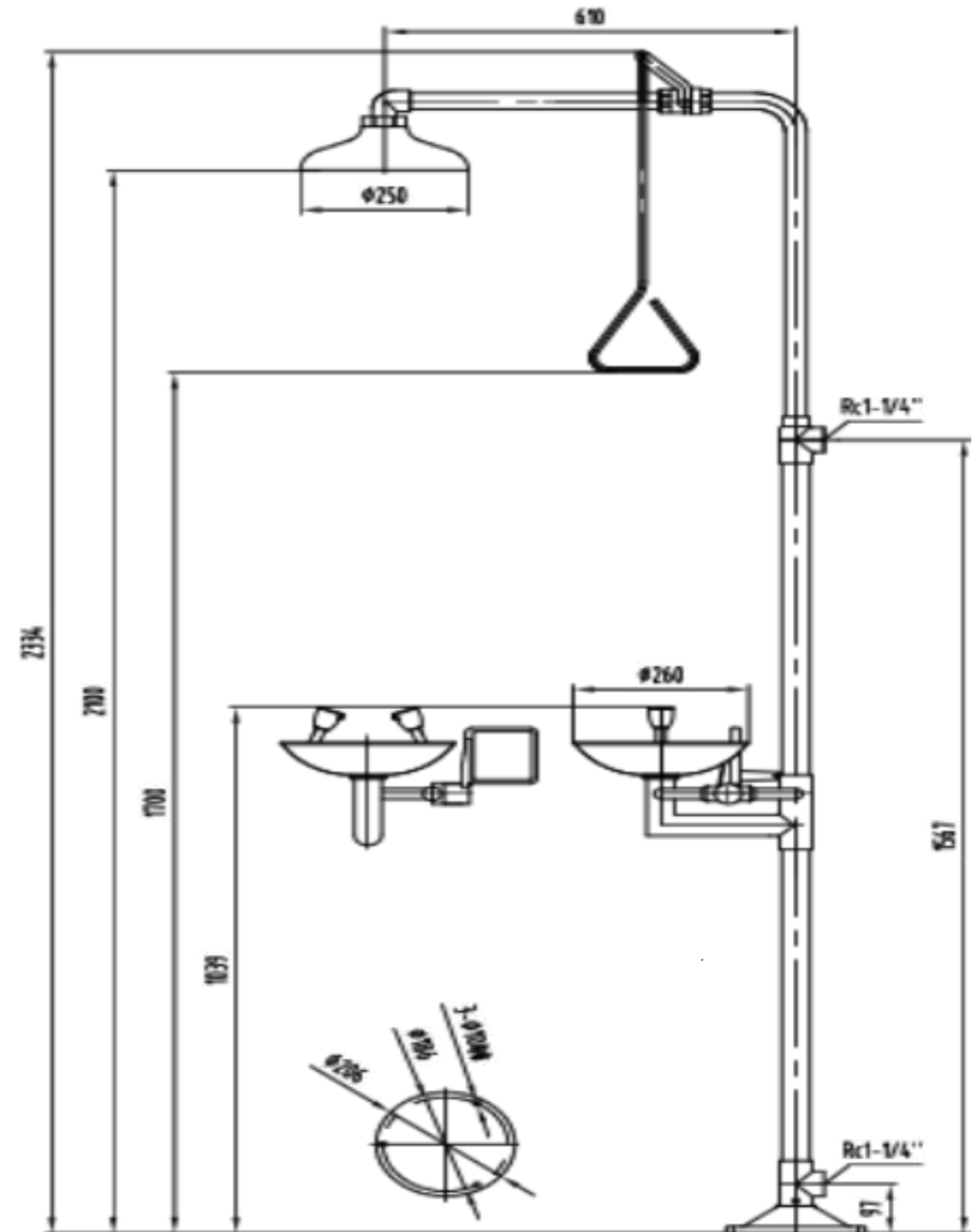
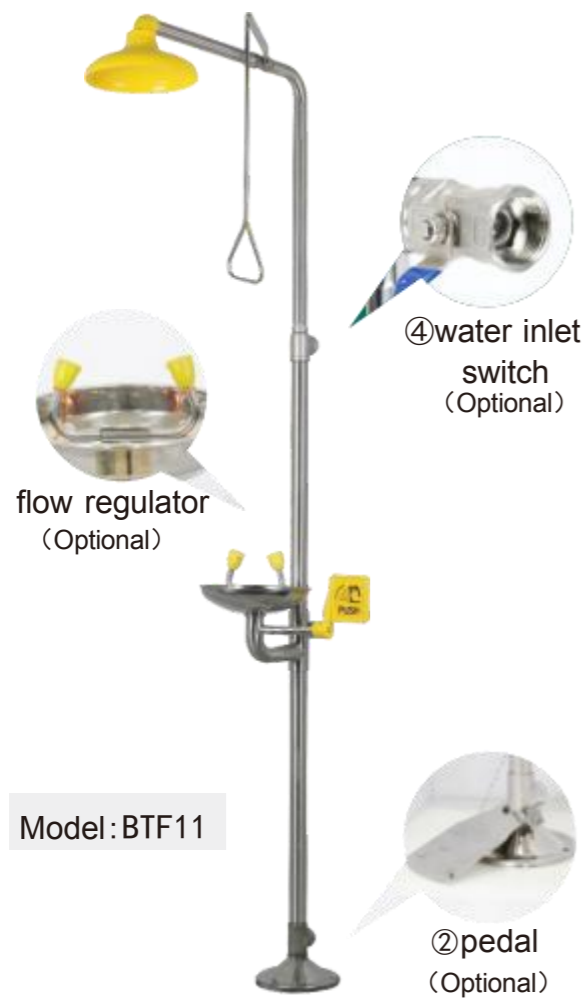
Compound Eye Washer	..... 01
Vertical Eye Washer	.....02
Portable Eye Washer	..... 04
Desktop Eye Washer	..... 05

### Standard Composite Eye Washer

- Optional 1. pedal, hand-foot linkage, more convenient operation. Push the pedal or push the hand push board, turn on the eye wash switch, turn off the hand push board, and turn off the eye wash switch.
2. High-performance anti-freezing device for air evacuation can turn off the water control switch after use, which can prevent frost from accumulated water inside the manual air evacuation equipment, effectively solve the problem that the pipeline can not be used because of the low ambient temperature, resulting in serious consequences.
3. Flow regulator can adjust the size of water flow according to the pressure of water source. Effective prevention of secondary injury caused by excessive water pressure.

#### Technical parameters

- |   |   |
|---|---|
| <ul style="list-style-type: none"> <li>1. Design and manufacturing standards: ANSI Z358.1-2014</li> <li>2. Main material: SS304 (optional Q235 or SS316L)</li> <li>3. Function: Eye wash + rinse</li> <li>4. Working environment temperature: 0°C ~55°C</li> <li>5. Applicable media: room temperature, drinking water or clean water meeting hygienic standards</li> <li>6. Nominal pressure: 1.0MPa</li> <li>7. Working pressure: 0.2MPa~0.4MPa</li> <li>8. Inlet size: internal thread 1-1/4"</li> </ul> | <ul style="list-style-type: none"> <li>9. Drainage outlet size: internal thread 1-1/4"</li> <li>10. Irrigation flow: &gt; 75.7L/min</li> <li>11. Eye wash flow: &gt; 11.4L/min, eyewash sprinkler with buffer device, prevent secondary damage to the eyes of the injured due to excessive water flow</li> <li>12. Irrigation sprinkler: standard with ABS sprinkler, optional stainless steel sprinkler</li> <li>13. Eyewash sprinkler: standard with ABS eyewasher, eyewasher. Optional stainless steel eyewash nozzle</li> </ul> |
|---|---|



Compound eye wash

Desktop Eye Washer



## Standard Vertical Eye Washer

optional 1. pedal, hand-foot linkage, more convenient operation. Push the pedal or push the hand push board, turn on the eye wash switch, turn off the hand push board, and turn off the eye wash switch.

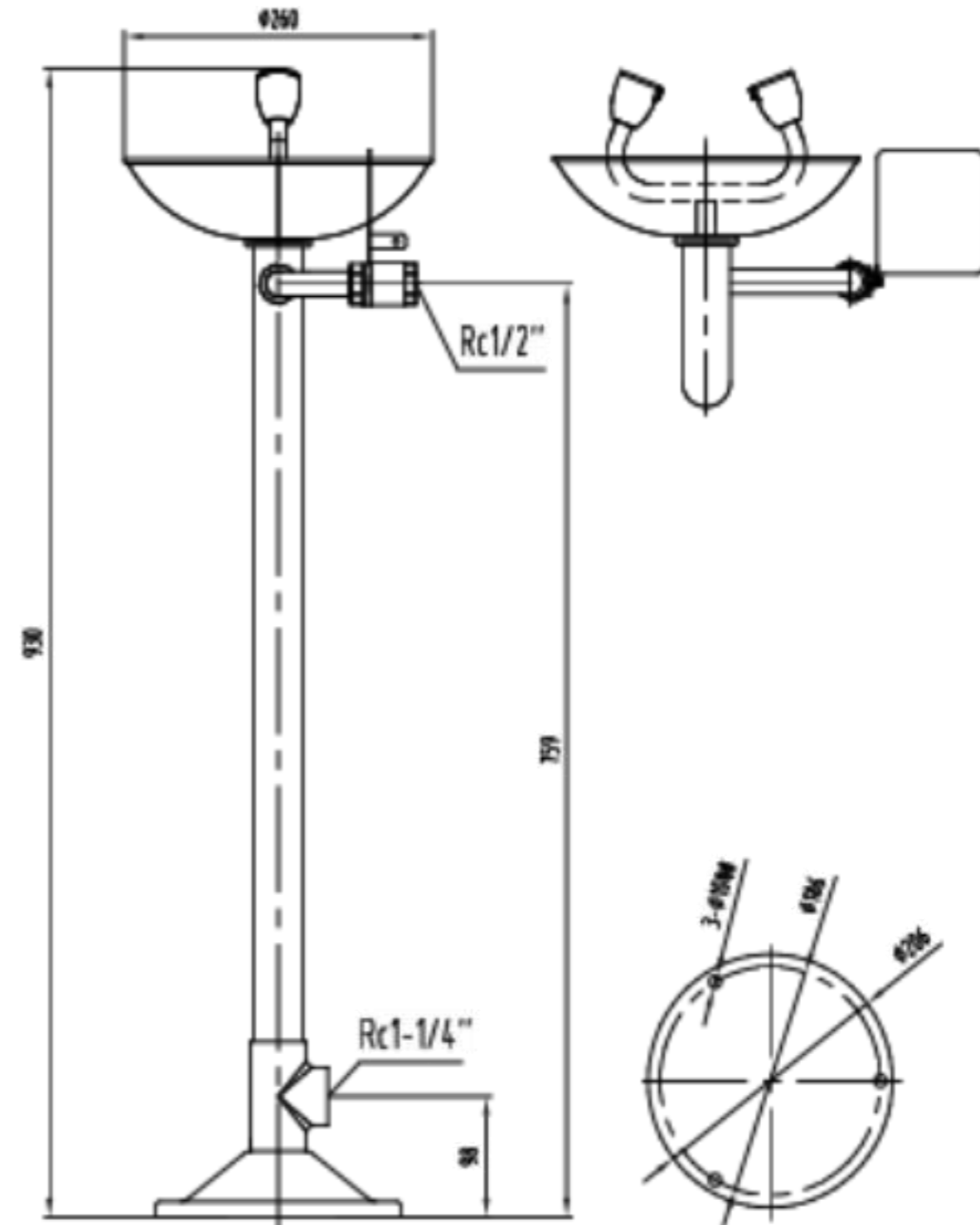
2. Flow regulator can adjust the size of water flow according to the pressure of water source. Effective prevention of secondary injury caused by excessive water pressure

### Technical parameters

1. Design and manufacturing standards: ANSI Z358.1-2014
2. Main material: SS304 (optional Q235 or SS316L)
3. Function: Eyewash
4. Working environment temperature: 0°C ~55 °C
5. Applicable media: normal temperature, drinking water or clean water meeting sanitary standards
6. Nominal pressure: 1.0MPa
7. Working pressure: 0.2MPa~0.4MPa
8. Intake water Size of mouth: inner thread 1/2"(customizable according to user's requirements)
9. Size of drainage outlet: inner thread 1-1/4" (customizable according to user's requirements)
10. Eye wash flow: > 11.4L/min. Eye wash nozzle has buffer device to prevent secondary eye injury caused by excessive water flow.
11. Eye shower head: standard ABS eye shower head, stainless steel eye shower head is optional.



Model: BTL21





Model: BTB53-C  
 capacity: 14 gallons (53L)  
 size: L\*W\*H = 472X674X1456mm flow  
 rate: 2.5L/Min.  
 Use time: > 15 min  
 configuration: cart + waste water  
 recovery tank



Model: BTB53-P  
 Eyewash capacity: 14 gallons (53L)  
 Size: L\*W\*H = 530X612X1548 mm  
 Performance: acid and alkali resistance  
 Flow rate: 2.5L/Min, use time: > 15  
 minutes  
 Cart capacity: 139L



Model: BTB60-2P  
 Eyewash capacity: 16 gallons (60L)  
 Size: L\*W\*H = 530X612X1431 mm  
 Performance: acid and alkali resistance  
 Flow rate: 2L/Min, use time: > 15 minutes  
 Cart capacity: 158L



## 8/16 gallon portable eyewasher

1. Eye washer quality: high quality non-toxic PE
2. Carbon steel (304 stainless steel, 316 stainless steel) + ABS anticorrosive coating
3. Open the dust cover and close the water.
4. Features: No need for external water source, easy to move, can be moved to the workplace at any time as needed.
5. Mold integrated molding, aging resistance, long life, excellent ultraviolet resistance

Model: BTB30-1  
 capacity: 8 gallons (30L)  
 size: L\*W\*H = 408X340X588mm  
 flow rate: 2.5L/Min.  
 Use time: > 6 min



Model: BTB60-1  
 capacity: 16 gallons (60L)  
 size: L\*W\*H = 513X497X622mm  
 flow rate: 2.5L/Min.  
 Use time: > 15 min



## 8/16 gallon portable eyewasher

1. Eye washer quality: high quality non-toxic PE
2. Carbon steel (304 stainless steel, 316 stainless steel) + ABS anticorrosive coating
3. Open the dust cover and close the water.
4. Features: No need for external water source, easy to move, can be moved to the workplace at any time as needed.
5. Mold integrated molding, aging resistance, long life, excellent ultraviolet resistance

Model: BTB30-2  
 capacity: 8 gallons (30L)  
 size: L\*W\*H = 550X257X365mm  
 flow rate: 2L/Min.  
 Use time: > 15 min



Model: BTB60-2  
 capacity: 16 gallons (60L)  
 size: L\*W\*H = 535X490X571mm  
 flow rate: 2L/Min.  
 Use time: > 15 min





## 14 gallon/53L portable eyewasher

1. Eye washer quality: high quality non-toxic PE
2. Carbon steel (304 stainless steel, 316 stainless steel) + ABS anticorrosive coating
3. Open the dust cover and close the water.
4. Features: No need for external water source, easy to move, can be moved to the workplace at any time as needed.
5. Mold integrated molding, aging resistance, long life, excellent ultraviolet resistance

Model: BTB53  
 capacity: 14 gallons (53L)  
 size: L\*W\*H = 513X497X622mm  
 flow rate: 2.5L/Min.  
 Use time: > 15 min



Portable eyewash

## Single/Double-Port Desktop Eye Washer

It is suitable for laboratories in the fields of education and industry, operating rooms in hospitals and other places. It has the characteristics of resisting oil, acid, alkali, salt and acid solution. It is easy to install and use.

### Technical parameters

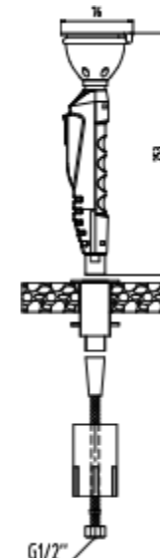
1. Design and Manufacturing Standards: ANSI Z358.1-2014
2. Main Material: ABS
3. Function: Eye wash
4. Working ambient temperature: 0°C ~55°C
5. Applicable Medium: Who Drinks or Clear Water at Normal Temperature and in accordance with

### Hygienic Level Standards

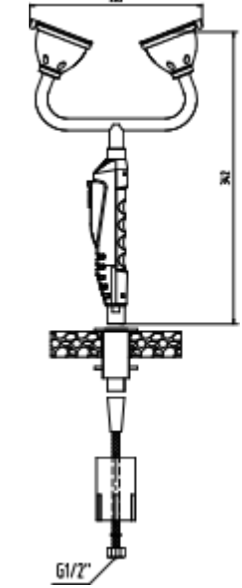
6. Nominal pressure: 1.0 MPa
7. Work pressure: 0.2 MPa to 0.4 MPa
8. Inlet Size: Internal Thread 1/2"
9. Eye wash flow: > 11.4L/min, eyewash nozzle with buffer To prevent secondary damage to the eyes caused by excessive water flow



Model: BTT11



Model: BTT21



Desktop Eye Washer